

THE BASSETT SUITE

1. OVERTURE - BATTENBURG

Chris Brown

$\text{♩} = 92$

4 *legato*
f

9 **A** **2** | 1. **2** | 2. **2**

15 **B** **4** *f legato* *rall.*

2. BUTTON

$\text{♩} = 120$

f *mf*

7 **C** **3** **1** **7** *mp* *f*

21

3. LOG

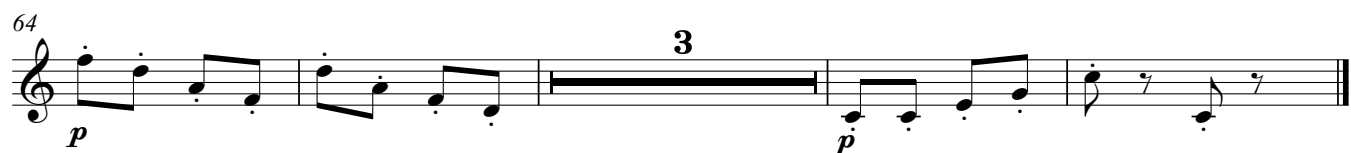
$\text{♩} = 82$

Cue Euph *p legato* **1** **1**

9 **D** *mf* *pp*

15 **1** **2** *pp* *mp* *pp*

4. COCONUT ROLL



5. CUBE

♩ = 144

Musical score for 1st Trombone, 5. CUBE. The score is in 2/4 time, key of B-flat major. It consists of 46 measures. The tempo is marked as ♩ = 144. The score includes dynamic markings (*f*, *mf*, *p*) and articulation (accents). Rehearsal marks J, K, and L are present. The score is divided into two systems: measures 1-26 and 27-46.

6. BATTENBURG - POSTLUDE

♩ = 92

legato

Musical score for 1st Trombone, 6. BATTENBURG - POSTLUDE. The score is in 4/4 time, key of B-flat major. It consists of 16 measures. The tempo is marked as ♩ = 92. The score includes dynamic markings (*f*, *legato*, *molto rall.*) and articulation (accents). Rehearsal marks M and N are present. The score is divided into two systems: measures 1-8 and 9-16.