

3. QUEEN MARGARET

Chris Brown

$\text{♩} = 84$

6 7 12 19 Clar 20 21

22 23 24 25 26 27 4

mf *mp*

Poco più mosso

31 32 33 34 35 36 37 38

mf *mp* *mf* *mp*

39 40 41 42 43 44 45 46 To Fl.

mf

47 Tempo primo 53 54 55 56 57 58

6 6 6 *mf* *mf*

59 60 61 68 69 70

7 7 *p*

71 72 73 85 87 88

12 12 rall. 2 1

3. QUEEN MARGARET

Chris Brown

$\text{♩} = 84$ 7 22 *Flute* 23 24 25 26

27 31 *Poco più mosso* 32 33 34

35 36 37 38 39 8

47 *Tempo primo* 53 54 55 56 57 58

59 60 61 85 87 88

3. QUEEN MARGARET

Chris Brown

$\text{♩} = 84$

6 7 15 22 Flute 23 24 25 26

27 31 mosso 32 33 34 35 36 37

38 39 47 53 54 55 56

57 58 59 60

61 85 rall. 87 88

Poco più
mf *mp* *mf* *mp* *mf*

Tempo primo

mp *mf*

mf *mp* *mf*

rall.

3. QUEEN MARGARET

Chris Brown

$\text{♩} = 84$

6 7 24

31 Poco più mosso 8 39 40 41 42 43 44 45 46

47 Tempo primo 6 53 54 55 56 57 58

59 60 61 85 87 88

24 rall. 2 1

3. QUEEN MARGARET

Chris Brown

♩ = 84

6 7 10 11 12 14

mp *mf* > *p* *mp*

15 16 31 Poco più mosso 38 39 40 41 42

15 16 31 38 39 40 41 42

mf > *p* *mp*

43 44 45 46 47 Tempo primo 53 54 55

43 44 45 46 47 53 54 55

mf > *p* *mf*

56 57 58 59 60 61 62 11

56 57 58 59 60 61 62

mf *f* > *mf* *p*

73 74 75 76 77 85 rall. 2 87 88

73 74 75 76 77 85 87 88

mp rall. 2 1

3. QUEEN MARGARET

Chris Brown

$\text{♩} = 84$

6 7 14 15 16 15

mp *mf > p*

Poco più mosso

31 38 39 40 41 42 43 44 45

7

mp *mf*

46 47 Tempo primo 53 54 55 56 57 58

6

p *mf* *mf*

59 60 61 62 23 85 87 88

p rall. 2 1

3. QUEEN MARGARET

Chris Brown

♩ = 84

6 7 20 27 28 29 30

Clarinet

31 Poco più mosso 32 33 34 35 36 37 38

mp *p* *mp* *p*

39 40 41 42 43 44 45 46

mf

Tempo primo

47 48 49 50 51 52 53 54

p *mp*

55 56 57 58 59 60

mf *f* *mf*

61 62 85 87 88

23 rall. 2 1

p

3. QUEEN MARGARET

Chris Brown

$\text{♩} = 84$

6 7 20 27 28 29 30

Clarinet

Poco più mosso

31 32 33 34 35 36 37 38

mp *p* *mp*

39 40 41 42 43 44 45 46

Tempo primo

47 48 49 50 51 52 53 54 55 56

p *mf* *mp*

57 58 59 60 61

mf *p*

62 85 87 88

23 rall. 2 1

3. QUEEN MARGARET

Chris Brown

♩ = 84

6 7 20 27 28 29 30

Clarinet

Poco più mosso

31 32 33 34 35 36 37 38

mp p mp p

39 40 41 42 43 44 45 46

Tempo primo

47 48 49 50 51 52 53 54 55

p mp

56 57 58 59 60

mf f mf

61 62 85 87 88

23 rall. 2 1

p

3. QUEEN MARGARET

Chris Brown

♩ = 84

6 7 20 27 28 29 30

Clarinet

Poco più mosso

31 32 33 34 35 36 37 38

mp *p* *mp* *p*

39 40 41 42 43 44 45 46

mf

Tempo primo

47 48 49 50 51 52 53 54 55 56

p *mp*

57 58 59 60 61

mf *p*

62 85 87 88

23 rall. 2 1

3. QUEEN MARGARET

Chris Brown

♩ = 84

6 7 20 27 28 29 30

Clarinet

p

Poco più mosso

31 32 38 39 40 41 42 43

6

mp *mp* *mf*

44 45 46 47 Tempo primo 53 54 55 56

6

p *mp*

57 58 59 60 61 85 87 88

24 rall. 2 1

3. QUEEN MARGARET

Chris Brown

♩ = 84

6 7 20 27 28 29 30

Clarinet

p

Detailed description: This block contains the first line of music, measures 6 through 30. It begins with a treble clef and a 3/4 time signature. Measure 6 is a whole rest. Measure 7 is a whole rest. Measure 20 is a whole rest. Measures 27-30 contain a melodic line for the Clarinet part, starting with a quarter note G4, followed by quarter notes F4, E4, D4, and C4. A dynamic marking of *p* is placed at the end of measure 30.

Poco più mosso

31 32 38 39 40 41 42 43

6

mp *mp* *mf*

Detailed description: This block contains the second line of music, measures 31 through 43. Measure 31 is a whole rest. Measure 32 is a whole rest. Measure 38 is a whole rest. Measures 39-43 contain a melodic line starting with a quarter note G4, followed by quarter notes F4, E4, D4, and C4. Dynamic markings include *mp* with an accent (>) at the start of measure 31, *mp* at the start of measure 39, and *mf* with an accent (<) at the end of measure 43. The tempo marking 'Poco più mosso' is placed above measure 31.

44 45 46 47 Tempo primo 53 54 55 56

6

p *mp*

Detailed description: This block contains the third line of music, measures 44 through 56. Measures 44-46 contain a melodic line starting with a quarter note G4, followed by quarter notes F4, E4, and D4. Measure 47 is a whole rest. Measures 53-56 contain a melodic line starting with a quarter note G4, followed by quarter notes F4, E4, and D4. Dynamic markings include *p* with an accent (>) at the end of measure 46 and *mp* with an accent (>) at the start of measure 53. The tempo marking 'Tempo primo' is placed above measure 47.

57 58 59 60 61 85 87 88

24 rall. 2 1

p

Detailed description: This block contains the fourth line of music, measures 57 through 88. Measures 57-61 contain a melodic line starting with a quarter note G4, followed by quarter notes F4, E4, D4, and C4. Measure 61 has a sharp sign (#) above the note. Measures 85-88 contain a melodic line starting with a quarter note G4, followed by quarter notes F4, E4, and D4. Dynamic markings include *p* with an accent (>) at the end of measure 61. The tempo marking 'rall.' is placed above measure 85, and the numbers '2' and '1' are placed above measures 87 and 88 respectively.

Trumpet 3 in B♭

3. QUEEN MARGARET

Chris Brown

♩ = 84

6 7 20 27 28 29 30

Clarinet

p

Poco più mosso

31 32 47 53 54 55 56

Tempo primo

15 6

mp *mp*

57 58 59 60 61 85 87 88

24

rall. 2 1

p

Trombone 1

3. QUEEN MARGARET

Chris Brown

♩ = 84

6 7 20 27 28 29 30

Clarinet

31 Poco più mosso 16

47 Tempo primo Cue: 1st Horn 8ve 48 49 50 51 52 1

p

53 54 55 56 57 58 59 60

mp < > < > *p*

61 24

85 rall. 87 88

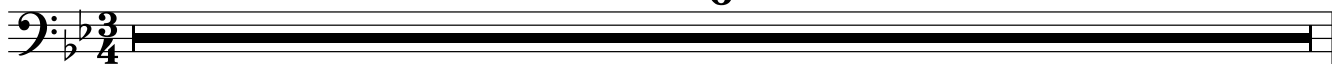
2 1

3. QUEEN MARGARET

Chris Brown

♩ = 84

6



7

20

27

Clarinet

28

29

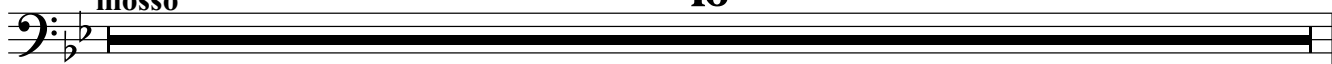
30



31

Poco più mosso

16



47

Tempo primo

48

49

50

51

52

Cue: 1st Horn 8ve

1



p

53

54

55

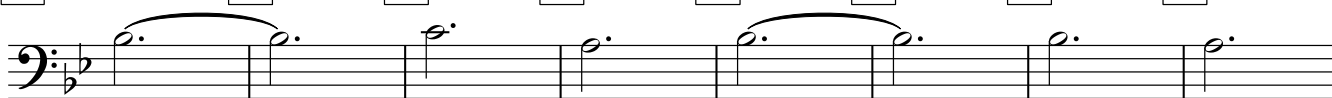
56

57

58

59

60



mp

<

>

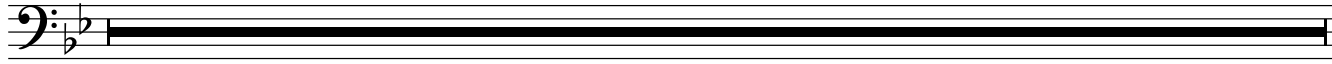
<

>

p

61

24



85

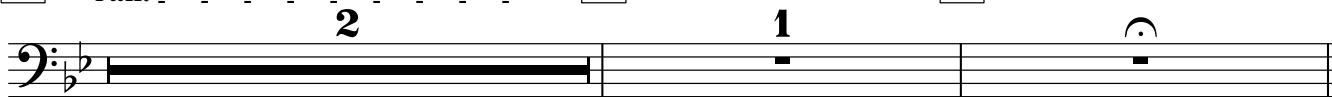
rall.

2

87

1

88

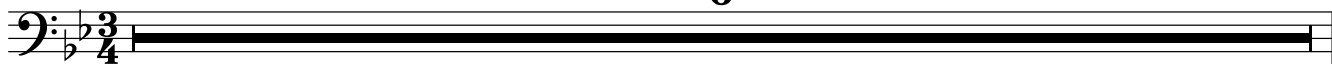


3. QUEEN MARGARET

Chris Brown

♩ = 84

6



7

20

27

Clarinet

28

29

30



Tempo primo

Cue: 1st Horn 8ve

31

Poco più mosso

16

47

48

49

50

51



p

52

53

54

55

56

57

58

59

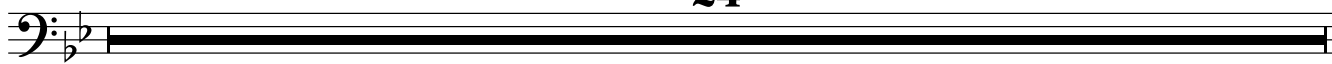
60



mp

61

24



85

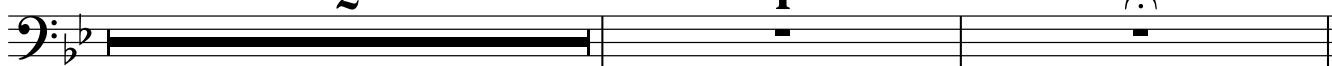
rall.

2

87

1

88



3. QUEEN MARGARET

Chris Brown

♩ = 84

6 7 20 27 Clarinet 28 29 30

mp

Detailed description: This block contains the first system of music, measures 6 through 30. It is written in bass clef with a 3/4 time signature. Measures 6-7 and 20-21 are marked with a double bar line and a '6', indicating a six-measure rest. Measure 27 is marked 'Clarinet', suggesting a change in instrumentation. The music consists of quarter and eighth notes. A dynamic marking of *mp* (mezzo-piano) is shown at the end of the system.

Poco più mosso

31 32 38 39 40 41 42 43 44

6

mp *mp* *mf*

Detailed description: This block contains the second system of music, measures 31 through 44. It is written in bass clef with a 3/4 time signature. Measures 31-32 and 38-39 are marked with a double bar line and a '6', indicating a six-measure rest. The tempo is marked 'Poco più mosso'. The music features quarter and eighth notes. Dynamic markings include *mp* (mezzo-piano) and *mf* (mezzo-forte).

Tempo primo

45 46 47 48 49 50 51 52

p

Detailed description: This block contains the third system of music, measures 45 through 52. It is written in bass clef with a 3/4 time signature. The tempo is marked 'Tempo primo'. The music consists of quarter and eighth notes. A dynamic marking of *p* (piano) is shown at the beginning of the system.

53 54 55 56 57 58 59 60

mp *p*

Detailed description: This block contains the fourth system of music, measures 53 through 60. It is written in bass clef with a 3/4 time signature. The music consists of quarter and eighth notes. Dynamic markings include *mp* (mezzo-piano) and *p* (piano).

61

24

Detailed description: This block contains the fifth system of music, measure 61. It is written in bass clef with a 3/4 time signature. The measure is marked with a double bar line and a '24', indicating a 24-measure rest.

85 rall. 87 88

2 1

Detailed description: This block contains the sixth system of music, measures 85 through 88. It is written in bass clef with a 3/4 time signature. Measure 85 is marked 'rall.' (ritardando). Measures 85-87 are marked with a double bar line and a '2', indicating a two-measure rest. Measure 87 is marked with a double bar line and a '1', indicating a one-measure rest. Measure 88 contains a half note. The system ends with a double bar line.

3. QUEEN MARGARET

Chris Brown

$\text{♩} = 84$
con sord.

2 3 4 5 6

7 8 9 10 11 12 13 14 15 16 17 18

19 20 21 22 23 24 25 26 27 28 29

30 31 32 33 34 35 36 37 38

Poco più mosso
senza sord.

39 43 44 45 46 47 **Tempo primo** 53 54 55 56

57 58 59 60 61 62 63 64 65 66 67 68

69 70 71 72 73 74 75 76 77 78

79 80 81 82 83 84 85 **rall.** 86 87 88

mp *mf* *mp* *mf* *mp* *mp* *mf* *mp* *mp* *p* *mf* *mp* *p* *p* *pp*

3. QUEEN MARGARET

Chris Brown

$\text{♩} = 84$
con sord.

mp

2 3 4 5 6

7 8 9 10 11 12 13 14 15 16 17 18

mf

19 20 21 22 23 24 25 26 27 28 29

mp *mf*

Poco più mosso

30 31 32 33 34 35 36 37 38 39

senza sord.

mp *mf* *mp* *mf* *mp*

Tempo primo

40 43 44 45 46 47 53 54 55 56 57

3 6

mp *p* *mf*

58 59 60 61 62 63 64 65 66 67 68

mp

69 70 71 72 73 74 75 76 77 78

p

79 80 81 82 83 84 85 86 87 88

p *rall.* *pp*

3. QUEEN MARGARET

Chris Brown

$\text{♩} = 84$
con sord.

2 3 4 5 6

7 8 9 10 11 12 13 14 15 16 17

18 19 20 21 22 23 24 25 26 27 28

29 30 31 mosso 32 senza sord. 33 34 35 36

37 38 39 40 43 44 45 46

47 Tempo primo 53 54 55 56 57 58 59 60 61

62 63 64 65 66 67 68 69 70 71 72

73 74 75 76 77 78 79 80

81 82 83 84 85 rall. 86 87 88

mp *mf* *p* *pp*

3. QUEEN MARGARET

Chris Brown

♩ = 84
Cue: Cellos

2 3 4 5 6

7 8 9 10 11 12 13 14 15 16 17

18 19 20 21 22 23 24 25 26 27 3

Poco più mosso *mp*

30 31 32 33 34 35 36 37 38 39

mp *p* *mp* *p*

40 47 **Tempo primo** 53 54 55 56 57 58

7 6

mf

59 60 61 69 70 71 72 73 74 75

8

p *p*

76 77 78 79 80 81 82

p

83 84 85 86 87 88

rall. *pp*